



NORMAN B. LEVENTHAL PARK

# We Are Celebrating 20 Years!

*[normanbleventhalpark.org](http://normanbleventhalpark.org)*

*[posquare.com](http://posquare.com)*



# NORMAN B. LEVENTHAL PARK



**City of Boston Parking Garage Unit 3** – For 35 years, this concrete structure covered the entire block in Post Office Square.



# NORMAN B. LEVENTHAL PARK



1988 view of Post Office Square from 225 Franklin Street. Where's the greenery?



# NORMAN B. LEVENTHAL PARK



City of Boston Parking Garage Unit 3 was not as well maintained as the Norman B. Leventhal Park. Be glad this photo is not a scratch & sniff!



# NORMAN B. LEVENTHAL PARK



October 1, 1988 – And the walls came tumbling down...



# NORMAN B. LEVENTHAL PARK

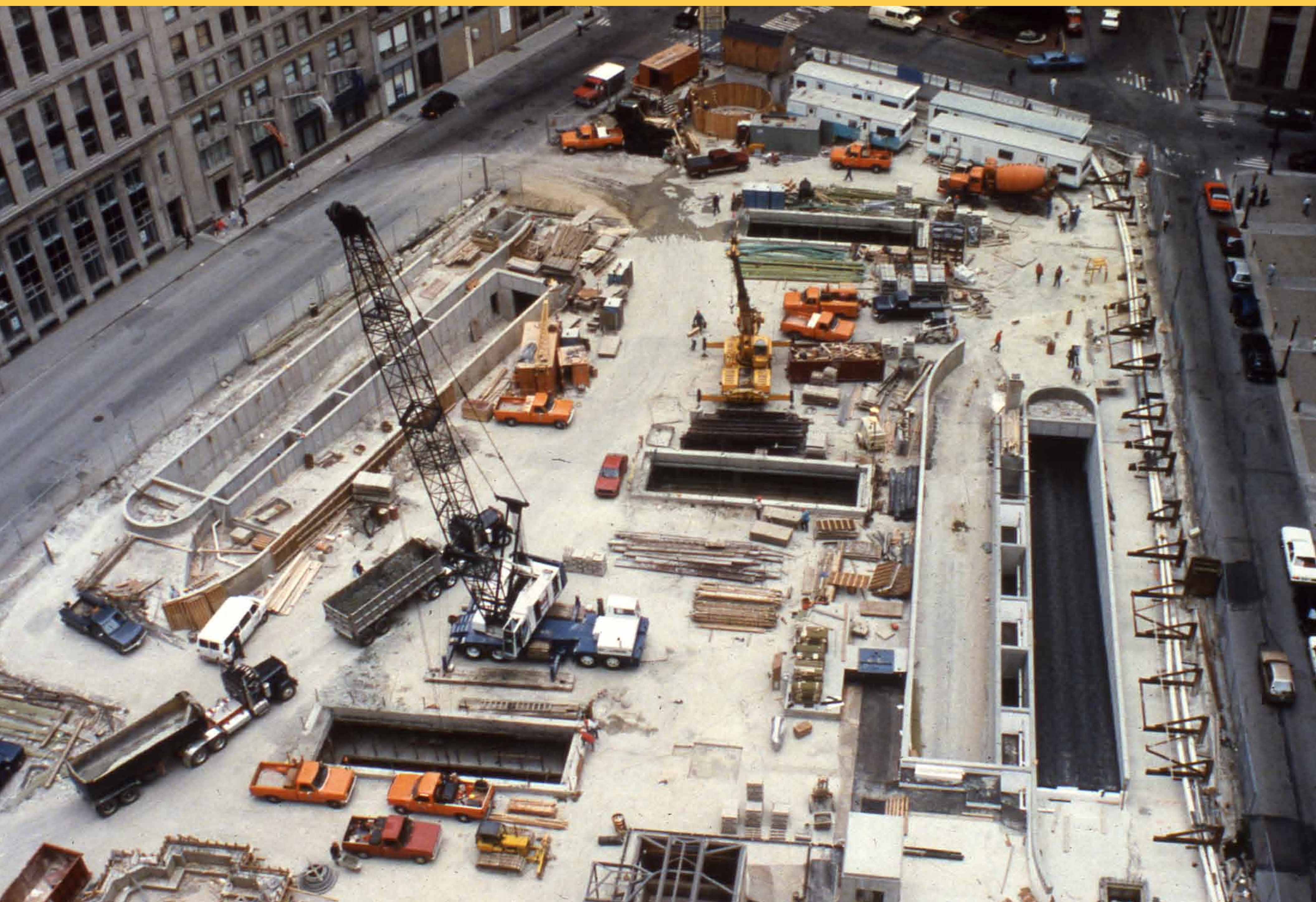


The 7-level parking garage under the Park has received numerous awards for innovative top-down construction.





# NORMAN B. LEVENTHAL PARK



**July 1990** – The Garage at Post Office Square under construction. It opened October 1, 1990, two years to the day of the demolition of the old garage.



# NORMAN B. LEVENTHAL PARK

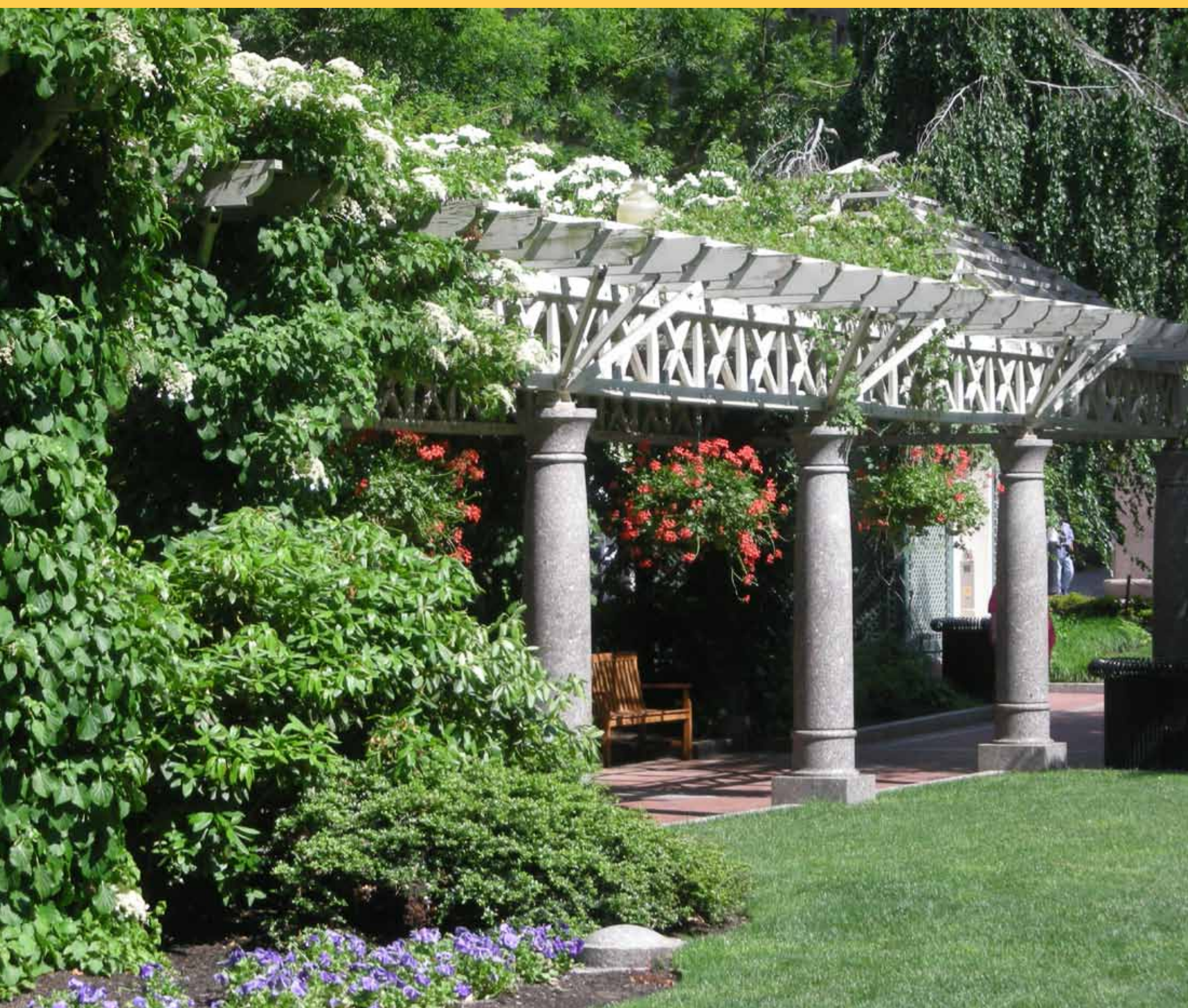
Since its completion in 1992, the Park has been a most welcome and welcoming neighbor.







## NORMAN B. LEVENTHAL PARK



The Park at Post Office Square was designed by Boston's Halvorson Design Partnership and completed in June 1992. In 1997, it was rededicated as Norman B. Leventhal Park to honor the man who first envisioned the project. This intimate space is beloved by office workers, shoppers, visitors and residents of the City. Its décor changes with each season, but is always the most welcoming room.

